

BSR Non-Newtonian Club Meeting

School of Chemical, Environmental, and Mining Engineering (SchEME),
University of Nottingham, UK
6th June 2006
Theatre A1, Coates Building.

Provisional Agenda

Time	Speaker	Title
10.00	<i>Coffee</i>	
10.30	Prof. John Mitchell <i>Food Sciences, Univ Nottingham</i>	Mouthfeel and taste perception from thickened foods. What is the relevant rheology ?
11.00	Dr. Bettina Wolf <i>Unilever Corporate Research</i>	Shear-thickening of an emulsion stabilised with hydrophilic silica particles
11.30	Dr. Karen Steel <i>Chem. Eng. Univ Nottingham</i>	High Temperature Rheology of Coal During Carbonization
12.00	Dr. Rob Poole <i>Engineering Univ of Liverpool</i>	Shear and extensional rheology of a wormlike surfactant solution
12.30	<i>Lunch & Posters</i>	
1.30	Fotis Spyropoulos <i>Chem. Eng. Univ Birmingham</i>	Rheological behaviour of aqueous phase-separated polymer-surfactant blends
1.55	Anson Ma <i>Chem. Eng. Univ of Cambridge</i>	Carbon Nanotube suspension rheology
2.20	Nuno Sereno <i>Food Sciences Univ Nottingham</i>	Physically modified xanthan gum, from particle to polymer rheology
2.45	<i>Tea</i>	
3.00	Julia Telford <i>Unilever R&D Colworth</i>	Measuring the Rheology of Structured Fluids
3.30	Dr. Amir Fahmi <i>Mech. Eng., Univ Nottingham</i>	Rheology Behaviour of Magnetorheological Materials: Based on Polymeric Matrix in the Presence of Varying an External Magnetic Field
4.00	Dr. Yuncheng Liang <i>Chem. Eng. Univ Nottingham</i>	Rheological properties of nanoceramic suspension in the presence of nonionic surfactant
4.30	<i>Depart</i>	

Registration:

This event is sponsored by Unilever Corporate Research and the British Society of Rheology. As such there is no charge. Attendees will need to cover their travel costs etc. If you wish to attend this meeting, please send the details in the box below to:

Dr. Karen Steel
School of Chemical, Environmental and Mining Engineering
University of Nottingham
Nottingham NG7 2RD
United Kingdom
Ph: 0115-9514078
Fax: 0115-9514115
Email: Karen.Steel@nottingham.ac.uk

Name:
Affiliation:
Ph:
Email:

Would you like to show a poster at lunchtime ?

Would you like information to be sent on overnight accommodation ?

Directions:

We are located at the University Park Campus (see Fig 1).



Coming by Rail: Hop off at Nottingham station and catch either a taxi (~£5) or bus (£1.30 for single or £2.50 for the day).

By taxi, ask to be dropped off at the Coates building.

By bus, Trent and Barton buses (don't need exact change) run from Broadmarsh bus station (about 250 metres walk north of railway station) – look for No.'s 5a, 5, 5b, 18, 32. Nottingham City Transport buses (need exact change) run from near the Market Square in the City Centre – look for No.'s 13, 13c, 33, 34, 35, 35A, 36. You will be dropped off at either the North, East or South Entrance.

Coming by car: From the M1 hop off at Jn 25 or 26.

Coming by plane: From East Midlands Airport, you can take Trent and Barton Bus 5b, or the Nottingham City Bus Runway 5. Or take a taxi (~£20).

Figure 1: Map of Nottingham.

Once at the Campus. We are located in the Coates building (see Fig 2), a very long skinny building. At the far west end on the ground floor is Theatre A1, the place of the meeting.

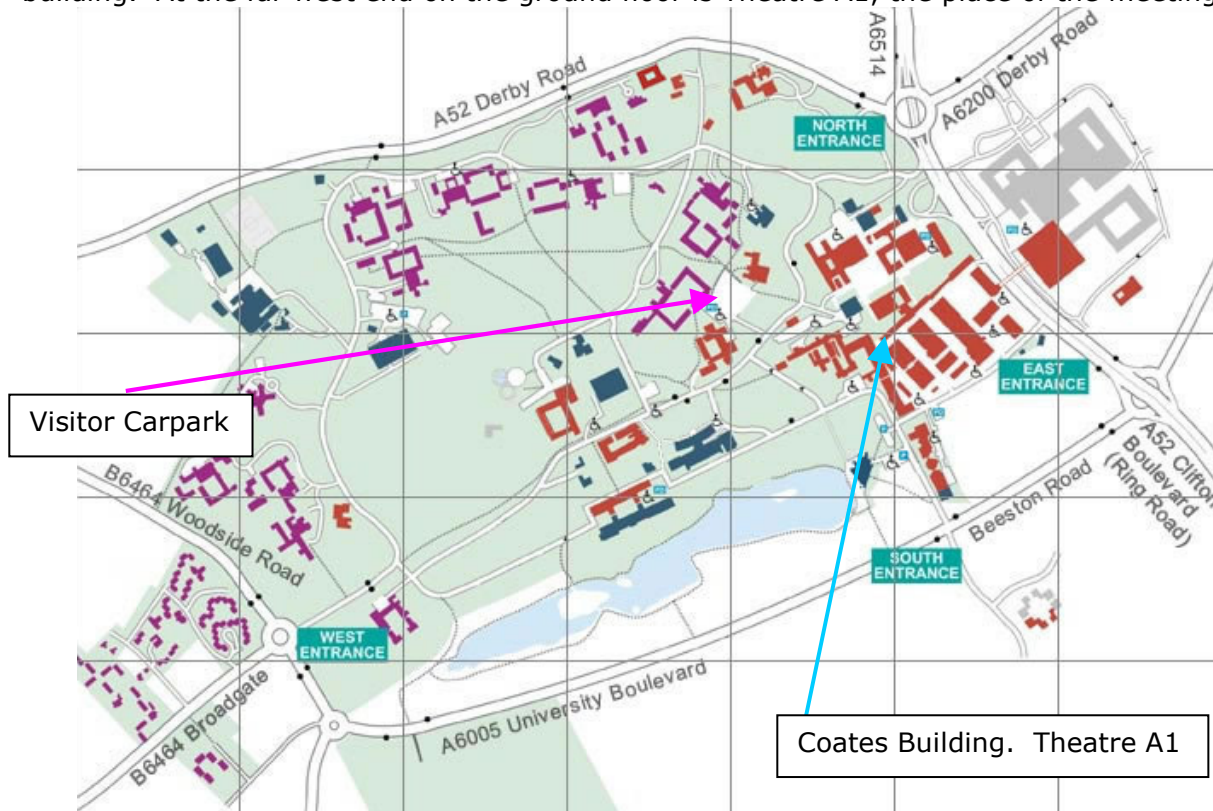


Figure 2: Map of University Park Campus, showing location for NNC meeting.